



Developing School Information Program: Integrated Management System based on Character Value at SMP Negeri 9 Tapung

Muhammad Yahya¹, Hadion Wijoyo^{2*}

^{1,2}High School Informatics and Computer Management (STMIK) Dharmapala Riau, Indonesia

*e-mail: yahya.oke83@gmail.com, hadion.wijoyo@lecturer.stmikdharmapalariau.ac.id

Article Information

Received: November 15, 2020
Revised: November 30, 2020
Online: December 01, 2020

Keywords

Information System, Student, Character Value

ABSTRACT

This research aims to develop a student data management system at 9 Tapung Junior High School (SMP) Negeri 9 Tapung, which has not documented using a computer or school web using text-based programming languages like HTML, JavaScript, CSS, and PHP. The student information system design at SMP Negeri 9 Tapung in its manufacture uses a literacy methodology where each phase can be carries repeatedly until it gets the desired results. The phase of system manufacture is the investigation, analysis, design, and implementation. To make this application, the author uses PHP and MySQL. This development research results create a student information system application that can display school data, student data, graphics form, and development, including data on honesty and discipline. The system also displays the student interests and talents observed, extracurricular activities, student violations, and achievement. This application still needs development, refinement, and the addition of features. Suggestions and criticism need from all related parties to create a better and structured information system to improve the quality and character of SMP Negeri 9 Tapung.

INTRODUCTION

Student components' existence is very much needed, especially that students implement an educational activity at school, which is both a subject and an object in transforming knowledge and essential skills. To manage student data to make it easier to carry out activities at Junior High School (SMP) Negeri 9 Tapung, the author made it a research place because the program information system about student work in the school has not documented using a computer or school website.

The student information system design at SMP Negeri 9 Tapung in its manufacture uses a literacy methodology where each stage or phase can repeatedly carry out until it gets the desired results with stages, namely investigation, analysis, design, and implementation. To make this application, the author uses PHP and MySQL. The resulting applications include school data, student data, report data, and student graph data, including data on the development of honesty, discipline, student interests and talents observed during counseling, extracurricular activities, student violations, achievement, and talent.

In this case, the authors chose SMP Negeri 9 Tapung, Tapung District, Kampar Regency. The school is in great demand by the people here, especially the people in Tapung. It can see from the increasing number of students. The aims and objectives of this research are to build an effective and efficient student administration information system using HTML (HyperText Markup Language) programming

language that can be accessed locally on a local host in a Local Area Network (LAN) network system. are: To design a student information system at SMP Negeri 9 Tapung, Tapung District, Kampar Regency.

METHODS

The type of data used in this research is qualitative data. Qualitative data is data in the form of words, not in the form of numbers. Qualitative data obtained through various data collection techniques, such as interviews and analysis of documents recorded in field notes (transcript). The data source used by the authors in this study is secondary data.

Secondary data is data obtained through intermediaries or indirectly so that the researcher needs to find or collect. In conducting research, information and data are needed as the basis for system development to support the discussion's validity in this research report—information and data obtained from the literature study, observation, and documentation.

According to Bogdan and Taylor (in Iskandar, 2013; 221), data analysis is a process that looks for formal efforts to find themes and formulate ideas as suggested by the data and as an effort to assist with those themes and ideas. The data analysis used is a descriptive-analytic method, which describes the data collected in words, pictures, and not numbers. Data derived from manuscripts, interviews, field notes, documents, and more. Are then describing to clarify reality or reality. The qualitative data analysis techniques used as follows:

Data collection

The collecting data is the research process stage, where the researcher applies specific scientific methods and techniques to systematically collect data for analysis purposes—the data collected in this research carrying by several methods, including observation and document reviews. The used data include school profile, school history, teacher data, student data, organizational structure, and more.

Data reduction

Reducing data means summarizing, selecting the main things, focusing on the essential things, looking for themes and patterns, and removing unnecessary. Data reduction can make by abstracting it. Abstraction attempts to make a core summary, process, and statements that need to remain in the research data. In other words, the data reduction process is carried out by researchers continuously when conducting research to produce core notes from the data obtained from the results of data mining.

Data Presentation (Data Display)

Data presentation is a structured collection of information that gives the possibility of concluding. The goal of data visualization is to communicate data or information clearly and effectively to readers. In this research, data is visualizing in a chart, infographic, diagram, or map.

Conclusion / Verification

Conclusion or verification is the final stage in the data analysis process. In this section, the researcher expresses conclusions from the data that has been obtaining. This activity intends to find the meaning of the data collected by looking for relationships, similarities, or differences. Drawing conclusions can finish by comparing the suitability of the research subjects' statements with the meanings contained in the basic concepts in the study.

RESULTS

Current System Analysis

The current system case is a description of the flow of the system that is running in school about how schools provide assessments to students; for more details, it can be seen in Figure 1 below:

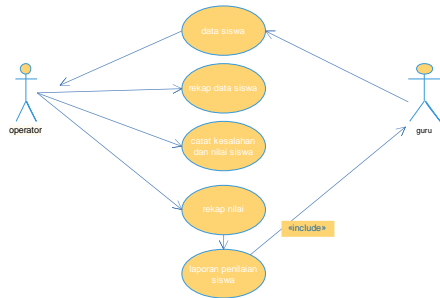


Figure 1. Current System Case

Old System Evaluation

After seeing the flow of the use case that is currently running, it can evaluate several things that are considered essential, such as 1) It is necessary to have an information system that stores data in a database; 2) Information systems are needed so that operators no longer need to record assessments

Proposed New System

The new use case diagram will explain the steps carried out by each actor in the information system; more details can see in Figure 2 below.

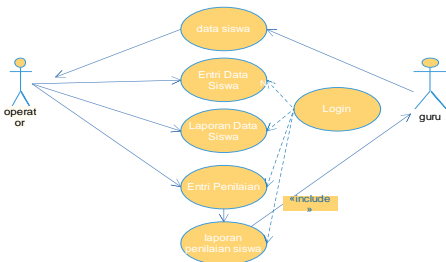


Figure 2. New System case

Class Diagram

The class diagram is a display between the relationships from the database that we will create. This class diagram is a data container for the data that we will input. For more details, we can see in Figure 3:

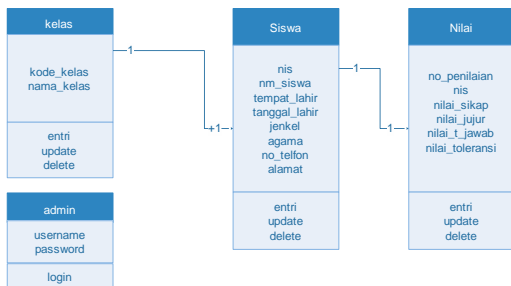


Figure 3. Class Diagram on system

Activity Diagram

Activity Diagram is a description of the activities of actors; here, the author only displays the activities of school operators; for more details, see the table below:

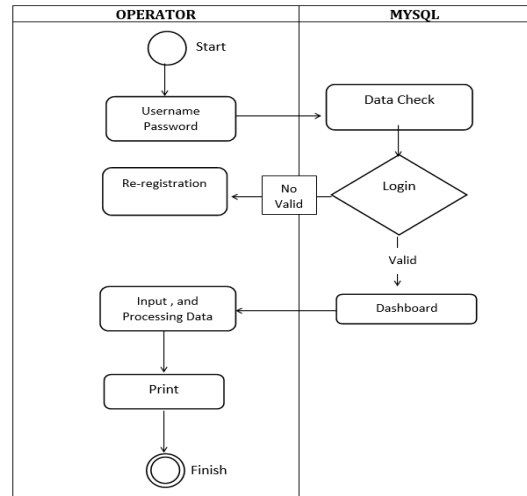


Figure 4. Activity Diagram on system

System Testing

Admin Login Form

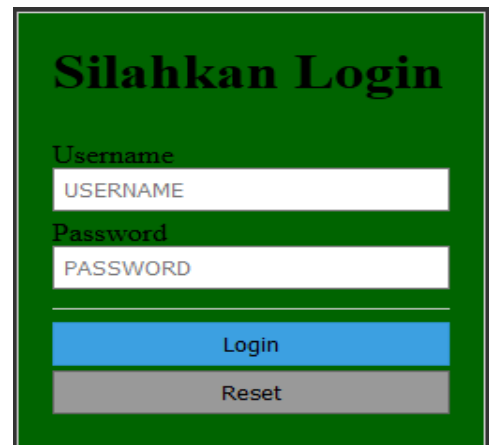


Figure 5. Admin Login Form on system

Admin Dashboard



Figure 6. Admin Dashboard on system

School Profile

Nama Sekolah	:	SMP Negeri 9 Tapung
Nama Kepala Sekolah	:	Khairi Anuar, S.Ag., M.Pd
NPSN	:	10400281
Status	:	Negeri
Bentuk Pendidikan	:	SMP
Akreditasi	:	A (AMAT BAK)
Status Kepemilikan	:	Pemerintah Daerah
Alamat	:	Jalan Teratai II
SK Pendirian Sekolah	:	044/KP/05.111/SP/01/1995

Figure 7. Junior High School Profile

Add New User Form

TAMBAH DATA SISWA

Nomor Induk Nasional (NISN)

Nomor Induk Siswa

Nama Siswa

Tempat Lahir

Tanggal Lahir Tanggal

Jenis Kelamin

Kelas

Nomor Telepon/WA

Alamat

Figure 8. Add New User Form

Deleting User

NISN	NIS	NAMA SISWA	TEMPAT LAHIR	TANGGAL LAHIR	JENIS KELAMIN	KELAS	NOHOK TELEPON	ALAMAT	AGAMA	KET.	AKSI
32423	42342	Yandri Pemido	Pekelbaru	2000-09-03	Perempuan	8	0823423849234	Jalan Penganggang	Islam	-	Edit Delete Cetak

Figure 9. Deleting User

Student Data Display Form

Pencarian data...

NISN	NIS	NAMA SISWA	TEMPAT LAHIR	TANGGAL LAHIR	JENIS KELAMIN	KELAS	NOHOK TELEPON	ALAMAT	AGAMA	KET.	AKSI
32423	42342	Yandri Pemido	Pekelbaru	2000-09-03	Perempuan	8	0823423849234	Jalan Penganggang	Islam	-	Edit Delete Cetak
123456789	12222	Randi Simara Pak P	Medan	2018-09-11	laki-laki	7	02147483647	jalan kusuma	islam	leha oss	Edit Delete Cetak
111111111	54644	Muhammad Yahya Arumi	Medan	2019-09-03	Laki-Laki	7	082839123121	jalan Riau	Islam	Anak Yatim	Edit Delete Cetak
122222211	12121	Raymon	Pkelbaru	2019-09-04	Laki-Laki						Edit Delete Cetak

Sistem Informasi Bidang Kesiswaan SMP Negeri 9 Tapung

Figure 10. Student Data Display Form

Changing Student Data Form

EDIT DATA SISWA

NISN

NIS

NAMA SISWA

TEMPAT LAHIR SISWA

TANGGAL LAHIR Tanggal

JENIS KELAMIN

KELAS

NOHOK TELEPON/WA

ALAMAT

AGAMA

KETERANGAN LAIBNYA

Sistem Informasi Bidang Kesiswaan SMP Negeri 9 Tapung

Figure 11. Changing Student Data Form

Showing Teachers Form

DATA GURU

TAMBAH DATA

Pencarian data...

KODE GURU	NIP	NAMA GURU	MAHA PELAJARAN	JABATAN	AKSI
111	dhendri	2147483647	SI	Head	Edit Delete Cetak
221	dhendri	2147483647	SI	Kepala Sekolah	Edit Delete Cetak

Sistem Informasi Bidang Kesiswaan SMP Negeri 9 Tapung

Figure 12. Showing Teachers Form

Add and Editing Teacher Data Form

TAMBAH DATA GURU

Kode Guru

Nama Guru

NIP

Maha Pelajaran

Jabatan

Sistem Informasi Bidang Kesiswaan SMP Negeri 9 Tapung

Figure 13. Add and Editing Teacher Data Form

Honest Attitude Character Assessment Form

NILAI SIKAP : JUJUR

Sikap Jujur Adalah perilaku dapat dipercaya dalam perkataan, tindakan dan perbuatan.

NISN NAMA SISWA KELAS

NO.	SKOR				ASPEK PENGAMATAN
	1	2	3	4	
1.	<input type="radio"/>	<input checked="" type="radio"/>	<input type="radio"/>	<input type="radio"/>	Tidak menyontek dalam mengerjakan ulangan/ulangan.
2.	<input type="radio"/>	<input checked="" type="radio"/>	<input type="radio"/>	<input type="radio"/>	Tidak menjadi plagiat (mengambil/menyalin karya orang lain tanpa menyebutkan sumber.
3.	<input type="radio"/>	<input checked="" type="radio"/>	<input type="radio"/>	<input type="radio"/>	Mengungkapkan perasaan apa adanya.
4.	<input type="radio"/>	<input checked="" type="radio"/>	<input type="radio"/>	<input type="radio"/>	Menyerahkan kepada yang berwenang barang yang ditemukan.
5.	<input type="radio"/>	<input checked="" type="radio"/>	<input type="radio"/>	<input type="radio"/>	Membuat laporan berdasarkan data atau informasi ada adanya..

Figure 15. Honest Attitude Character Assessment Form

DISCUSSION

Based on Permendikbud No. 24 of 2016, regarding core competencies and essential competencies, one of which is Core Competency 2, there are 7 (seven) attitudes. Processing the results of the attitude value for the predicate "Very Good" is if students tend to have an excellent attitude in most subjects, it can assume that these students' predicate is very good. Meanwhile, if students do not have any notes in the journal, these students' attitudes can be assumed to be "Good" (Guidelines for Assessment by Students and Education Units for Junior High Schools; 39). The formulation indicators of student attitude consisting of honesty, discipline, responsibility, cooperation, cooperation, tolerance, courtesy, and self-confidence (see Guidelines for Assessment by Students and Education Units for Junior High Schools; 35).

Tabel 1. Student Attitude Indicators

Attitude and Understanding	Indicator
Honest Honest attitude is responsible behavior in words, actions, and deeds.	<ul style="list-style-type: none">- The students must not cheat on taking exams or tests.- It does not become plagiarism (taking/copying other people's work without mentioning the source).- Express feelings as they are.- Turning over to the authorities, the items he finds.- Create reports based on data or information as is.- The students must acknowledge mistakes or deficiencies that the students have.
Discipline A disciplined attitude is an action that shows orderly behavior and complies with various rules and regulations.	<ul style="list-style-type: none">- Arrive on time.- Obey the rules or regulations with the school/school.- Work on or collect assignments according to a predetermined time.- Follow the rules of right and correct written language.- Carry out individual tasks properly and accept the risk of the actions taken.
Responsible It is a person's attitude and behavior to carry out his duties and obligations that he should do towards himself, society, the environment (natural, social, and cultural), the country, and God Almighty.	<ul style="list-style-type: none">- The students must not blame/accusing others without real evidence.- The students must return borrowed items.- Acknowledge and apologize for wrongdoing.- The students must keep promises and not blame others for the mistakes of our actions.- Carry out what has said without being asked.- Do not bother friends with different opinions.- Accept an agreement even if it differs from his opinion.- Can accept other people's shortcomings.
Tolerance Tolerances are attitudes and actions that respect a variety of backgrounds, views, and beliefs	<ul style="list-style-type: none">- Able and willing to work with anyone with a variety of backgrounds, views, and beliefs.- Do not insist on opinions or self-confidence in others.- The students must be willing to learn from (being open to) others' beliefs and ideas to understand other people better.- Open or willing to accept something new.- The students must actively be involved in community service cleaning classes or schools.
Cooperation Is working together with others to achieve common goals by sharing tasks and mutual help sincerely	<ul style="list-style-type: none">- The students must willingness to carry out tasks as agreed.- Willing to help others without expecting anything in return and active in group work.

Attitude and Understanding	Indicator
<p>Polite It is the right attitude in the association, both in speaking and in behavior. Norms of politeness are relative, meaning that what is considered good/polite at a particular place and time can be different at other places and times</p> <p>Confidence. Is a mental or psychological condition of a person who gives a strong belief to act or act</p>	<ul style="list-style-type: none"> - The students must focus on group goals. - The students must not prioritize personal interests. - The students must find ways to overcome differences in opinion/thoughts between themselves and others. - Encourage others to work together to achieve common goals. - Respect for elders. - The students must learn no words harsh and obscene. - Do not spit anywhere. - The students must not interrupt conversations at inappropriate times. - The students must say thanks after receiving help from others and must behave greetings, smiles - Ask for permission when entering someone else's room or using other people's belongings. - The students must treat others as students would like to treat - Opinions or activities without hesitation. - Able to make decisions quickly. - Not easily discouraged. - Not awkward in acting. - Dare to present to the class. - Dare to argue, ask, or answer questions.

According to the Regulation of the Minister of Education and Culture Number. 81A in 2013, students obtained the scores are:

1. Very good: when obtaining a score: $3,33 \leq \text{score} < 4,00$
2. Good: when obtaining a score: $2,33 \leq \text{score} < 3,33$
3. Enough: when obtaining a score: $1,33 \leq \text{score} < 2,33$
4. Less: when obtaining a score: $\text{score} \leq 1,33$

CONCLUSION

The student information system at SMP Negeri 9 Tapung uses text-based programming languages such as HTML, JavaScript, CSS, and PHP. This system manages student data related to attitude character assessment to assess students' behavior while in school to make it easier to carry out routine student affairs and improve character in the teaching and learning process. The character assessments that are processed are honesty, discipline, responsibility, tolerance, cooperation, self-confidence, and tolerance. A computerized system will simplify the teacher's duties in carrying out disciplinary enforcement actions and increase students' character in school. This information system is the initial stage in managing data on students' attitudes and character values. For this reason, the development, improvement, and addition of features and suggestions and criticisms from all parties expecting to create a better and structured information system for the improvement of the quality and character of students who are good at school.

REFERENCES

- Andrianto, S., & Wijoyo, H. (2020). Rancang Bangun Sistem Informasi Siswa Berbasis Web di Sekolah Minggu Buddha Vihara Dharmaloka Pekanbaru. *TIN: Terapan Informatika Nusantara*, 1(2), 83-90.
- Anggraeni, Elisabet Yunaeti dan Rita Irfiani (2017). *Pengantar Sistem Informasi*. Yogyakarta: CV. Andi Offset (Penerbit Andi).

- Ayu, Fitri dan Nia Permata Sari, (2018). Perancangan Sistem Informasi Pengolahan Data Praktek Kerja Lapangan (PKL) pada Devisi Humas PT. Pegadaian. *Jurnal Intra-Tech* Vol. 2, No. 2 Oktober 2018. AMIK Mahaputra; Riau.
- Bramesta, & Wijoyo, H. (2019). Perancangan Sistem Informasi Pengelolaan Data Warga Binaan Sosial Di UPT. Bina Laras Dinas Sosial Provinsi Riau. *Jurnal Ilmu Komputer dan Bisnis*, 10(2), 2226–2233. <https://doi.org/10.47927/jikb.v10i2.170>
- Enterprise, Jubilee (2016). *Trik Cepat Menguasai Microsoft Visio*. Jakarta: PT. Elex Media Komputindo.
- Enterprise, Jubilee. (2017). *HTML 5 Komplet*. Jakarta: PT. Alex Media Komputindo.
- Fipiana, Wahyu Inggar, (2018). *Penggunaan Aplikasi Komputer Praktis Microsoft Office Visio*. Ponorogo: Uwasi Inspirasi Indonesia.
- Firman, Hans F. Wowor, Xaverius Najoan (2016). Sistem Informasi Perpustakaan Online Berbasis Web. *E-Journal Teknik Elektro dan Komputer vol.5 no.2* Januari-Maret 2016
- Firmansyah, S. E., & Si, M. (2020). *Kewirausahaan Berbasis Teknologi (Teknopreneurship)*. Purwokerto: Penerbit CV. Pena Persada
- Rifuddin, B., Ilham, D., & K, N. (2020). Academic Services in Islamic Education Management Study Program: The Actualization of the Basic Values of the State Civil Apparatus at IAIN Palopo. *International Journal of Asian Education*, 1(2), 81-94. <https://doi.org/10.46966/ijae.v1i2.34>
- Isa, I. G. T., & Hartawan, G. P. (2017). Perancangan Aplikasi Koperasi Simpan Pinjam Berbasis Web (Studi Kasus Koperasi Mitra Setia). *Jurnal Ilmiah Ilmu Ekonomi (Jurnal Akuntansi, Pajak Dan Manajemen)*, 5(10), 139–151.
- Iskandar, Yenny. (2018). *Buku Ajar Pengantar Aplikasi Komputer*. Yogyakarta: Deepublish.
- Mardiani, Eri dkk. (2016). *Aplikasi Penggajian Menggunakan Visual Basic, MySQL, dan Data Report*. Jakarta; PT. Elexmedia Komputindo.
- Munawar. (2015), *Pemodelan Visual dengan UML* . Jakarta Barat: Perpustakaan Universitas Esa Unggul.
- Supono, (2018). *Pemograman Web Dengan Menggunakan PHP dan Framework Codeigniter*. Deepublish; Yogyakarta.
- _____(2017). *Panduan Penilaian oleh Peserta Didik dan Satuan Pendidikan untuk Sekolah Menengah Pertama*. Kementerian Pendidikan dan Kebudayaan; Jakarta; Direktorat Pembinaan Sekolah Menengah Pertama.
- Wijoyo, H. (2020). Rancang Bangun Sistem Penjualan pada CV. Sukses Karya Abadi Berbasis Web. *Jurnal Ilmu Komputer dan Bisnis*, 11(1), 2306-2319.
- Wijoyo, H. Perancangan Sistem Informasi Administrasi pada Quality Fresh Laundry Pekanbaru. *JS: Jurnal Sekolah*, 4(1), 27-32.
- Wijoyo, H., & Marpaung, S. L. (2020). The Influence of Quality Information and Reputation Of TIX ID Application Toward the Interest of Purchase Tickets Online in XXI Cinema Ciputra Seraya Mall Pekanbaru City. *Jurnal Suluh Pendidikan*, 8(2), 9–21. <https://doi.org/10.36655/jsp.v8i2.275>